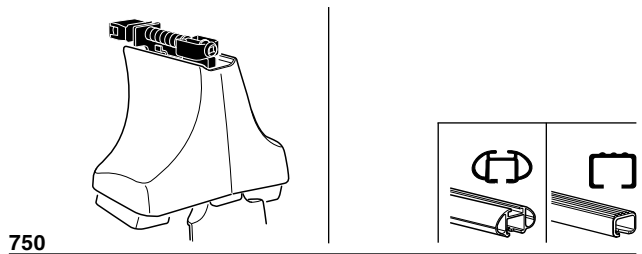
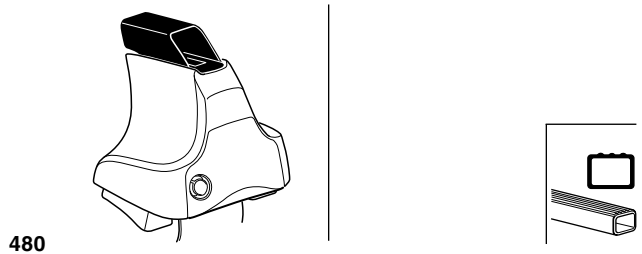
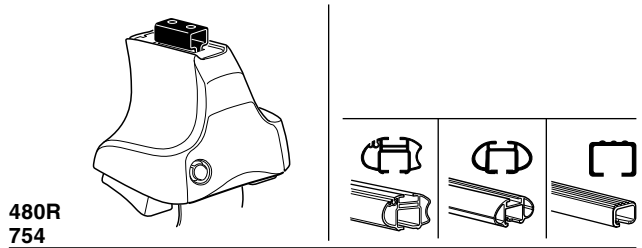


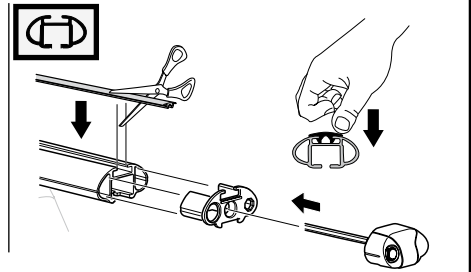
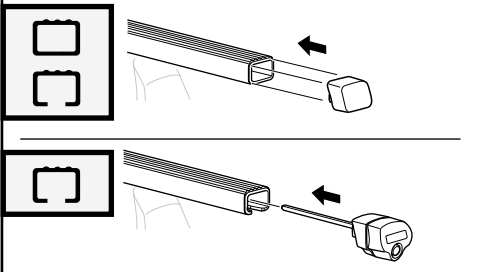
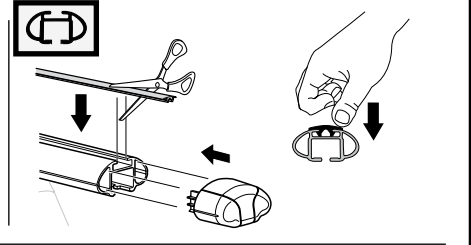
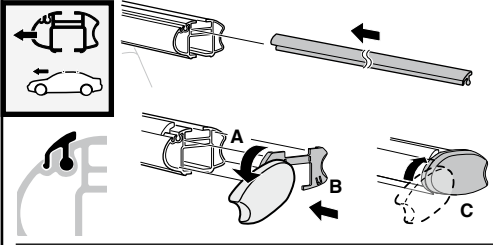
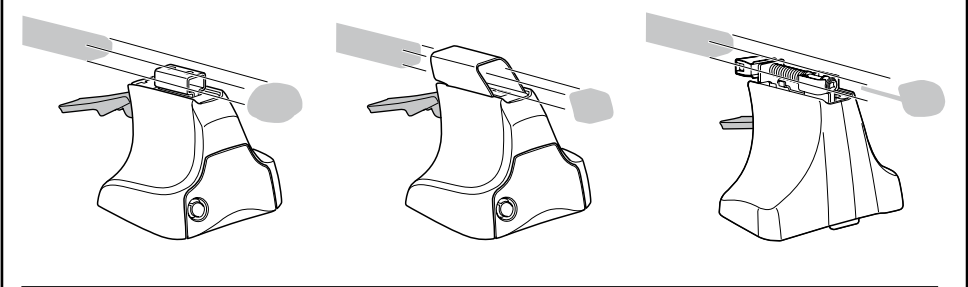
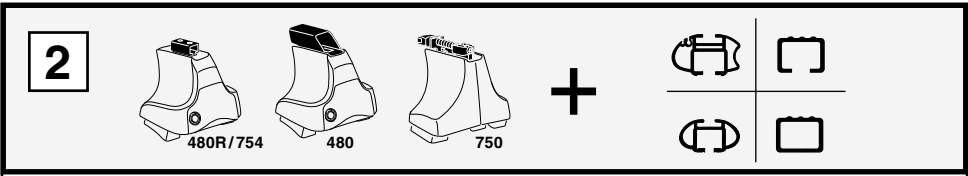
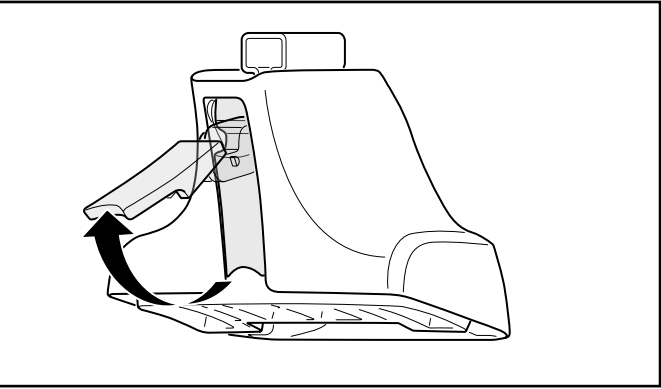
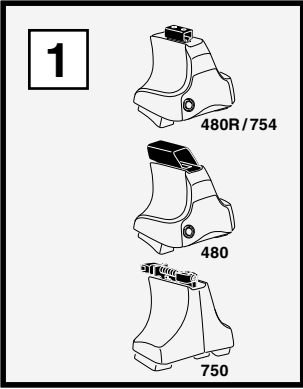
Kit 1450

VOLVO V70, 5-dr Estate, 07-*

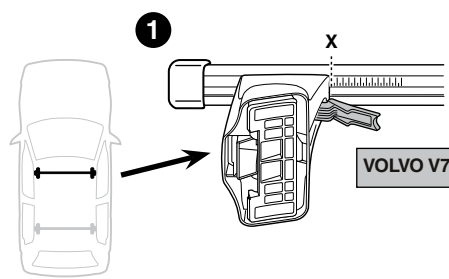
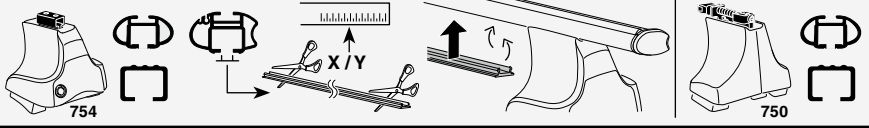
* Without railing



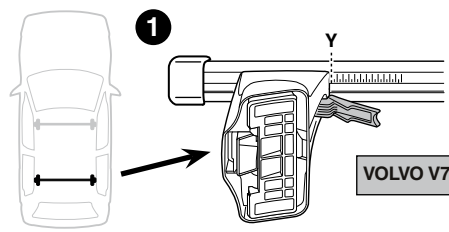
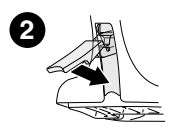
Kit



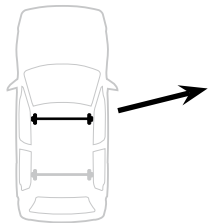
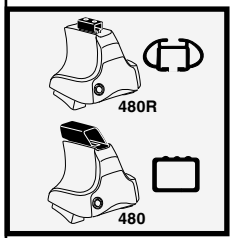
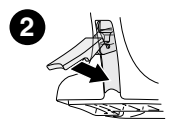
3



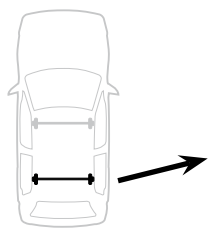
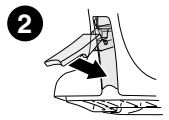
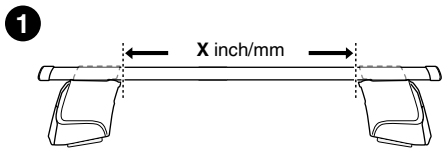
VOLVO V70, 5-dr Estate, 07-	X
	44,5



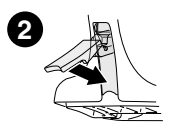
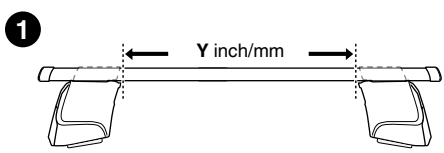
VOLVO V70, 5-dr Estate, 07-	Y
	38,5



VOLVO V70, 5-dr Estate, 07-	X inch	X mm
	43 1/8"	1096 mm



VOLVO V70, 5-dr Estate, 07-	Y inch	Y mm
	40 3/4"	1036 mm



4

VOLVO V70, 5-dr Estate, 07-

204



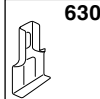
629



206



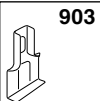
630



15



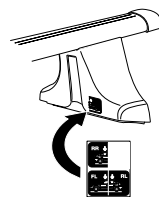
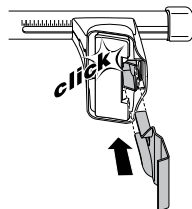
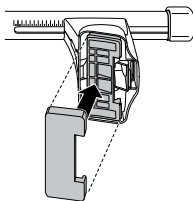
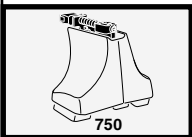
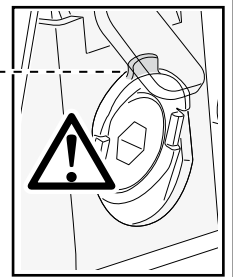
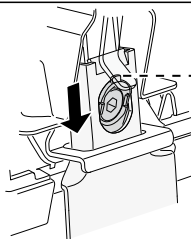
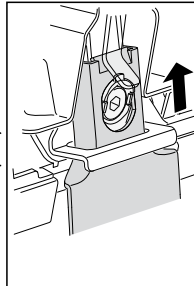
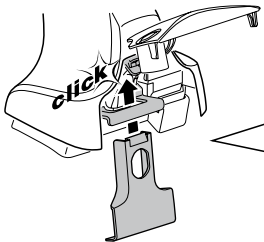
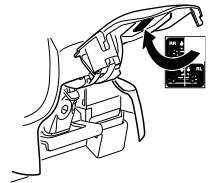
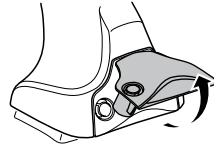
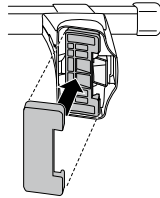
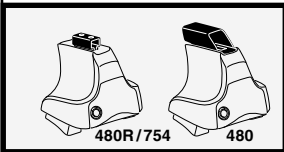
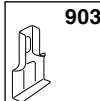
903



15



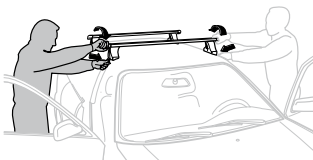
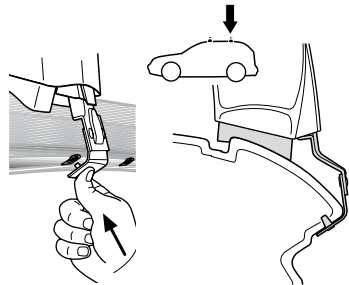
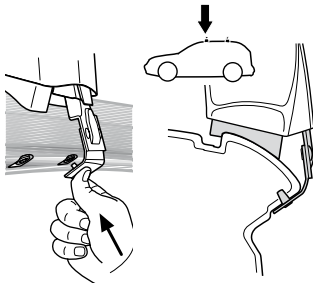
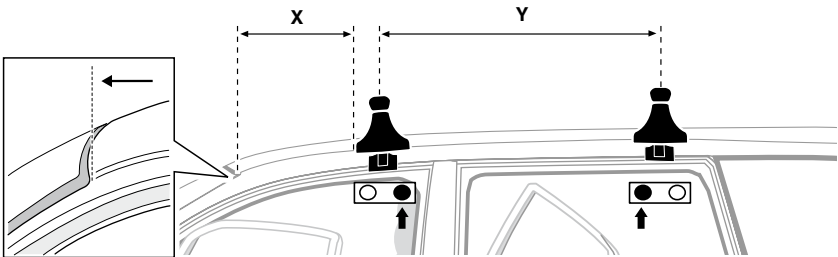
903



5



	X mm	Y mm	X inch	Y inch
VOLVO V70, 5-dr Estate, 07–	230 mm	700 mm	9"	27 1/2"



- | | | | |
|--------------|---|------------|---|
| GB/US | Tighten alternately | CZ | Pokręťta bagażnika dokręcaj dokręcaj naprzemiennie. |
| D | Die Schrauben abwechselnd anziehen | SK | Dofahujtie striedavo |
| F | Serrer alternativement chaque côté | SLO | Privijajte izmenično. |
| NL | Afwisselend aan de linker- en de rechterkant aandraaien | HR | Naizmjenično zategnite |
| I | Alternare il serraggio delle viti | HU | Egymástól függetlenül szorítandó |
| E | Apretar alternativamente | GR | Σφιγγετε εναλλάξ |
| PT | Aperte alternadamente | TR | Dönüşümlü sıkın |
| S | Dra åt växelvis | 中文 | 交替拧紧 |
| FIN | Kierrä vuorotellen | 한국어 | 번갈아 가며 조이십시오. |
| EST | Pinguldage vaheldumisi | 日本語 | 交互に締め付けてください。 |
| LAT | Pielveciēt pamīšus | ไทย | ขันในแบบสลับ |
| LIT | Užsukinėkite pakaitomis | | |
| PL | Śruby dokręcaj naprzemiennie | | |
| RU | Затягивайте попеременно | | |

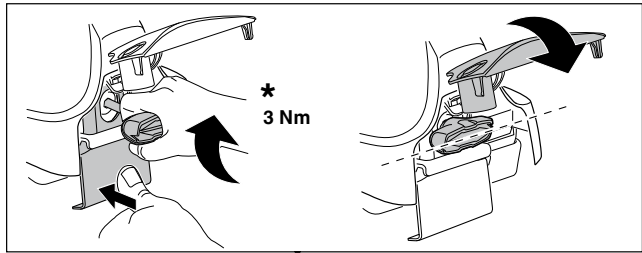
6



480R/754



480



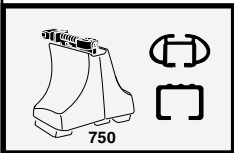
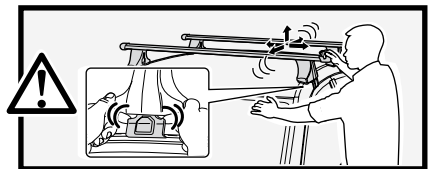
*
3 Nm



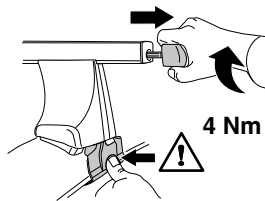
*



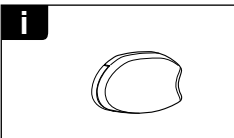
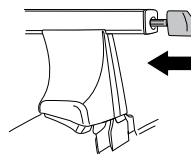
*
≈ 3 Nm



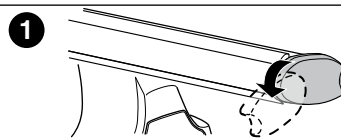
750



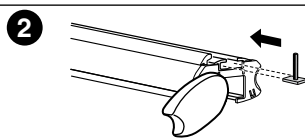
4 Nm



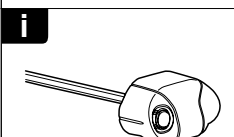
i



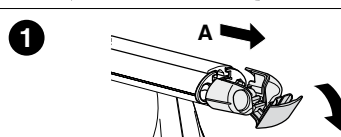
1



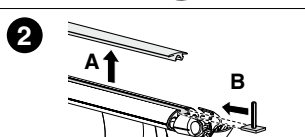
2



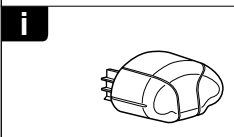
i



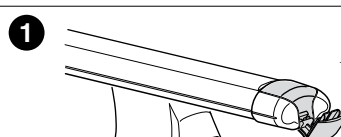
1



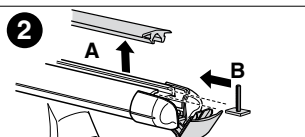
2



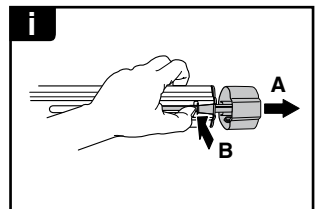
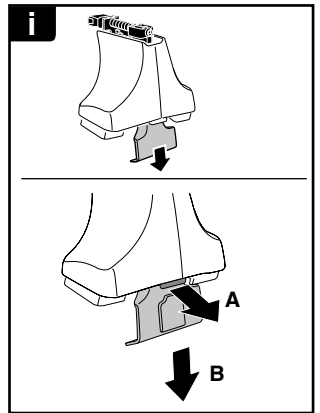
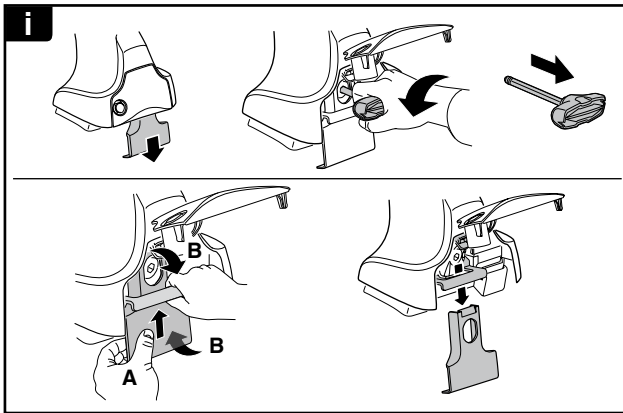
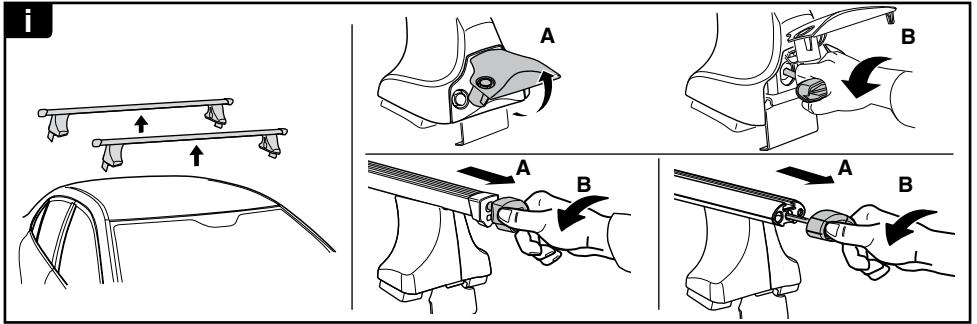
i



1



2



THULE
SWEDEN
**ONE
KEY
SYSTEM**



- 544 (x4)
- 596 (x6)
- 588 (x8)
- NA 510 (x10)
- EUR 452 (x12)
- ASIA



WW ▶ Thule Sweden AB, Box 69, 330 33 Hillerstorp, SWEDEN
NA ▶ Thule Inc., 42 Silvermine Road, Seymour, Connecticut 06483, USA

info@thule.com
customer.service@thule.com

www.thule.com