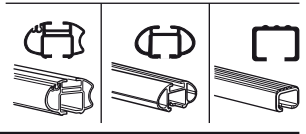
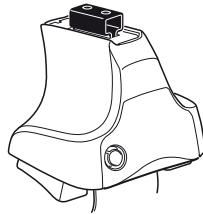


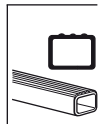
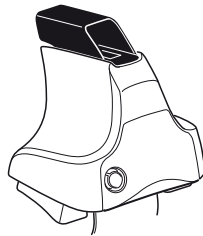
Kit 1395

DAIHATSU Be-Go, 5-dr SUV, 06-
DAIHATSU Terios, 5-dr SUV, 06-
TOYOTA Rush, 5-dr SUV, 06-(JPN)

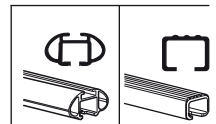
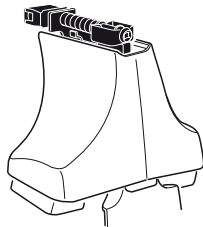
480R
754



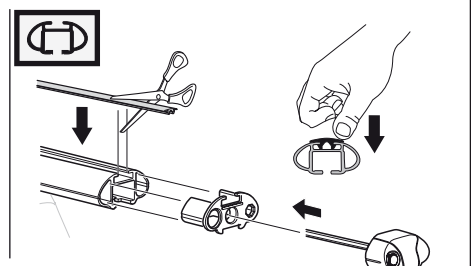
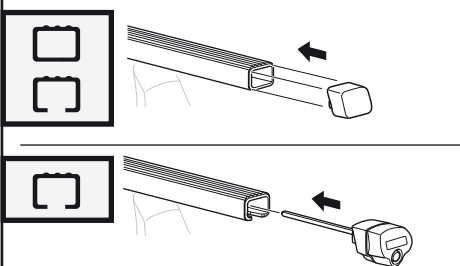
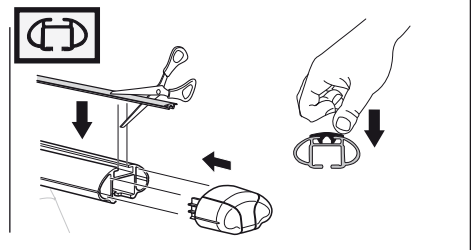
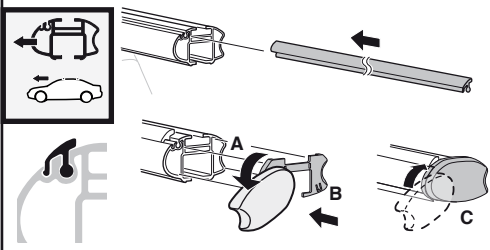
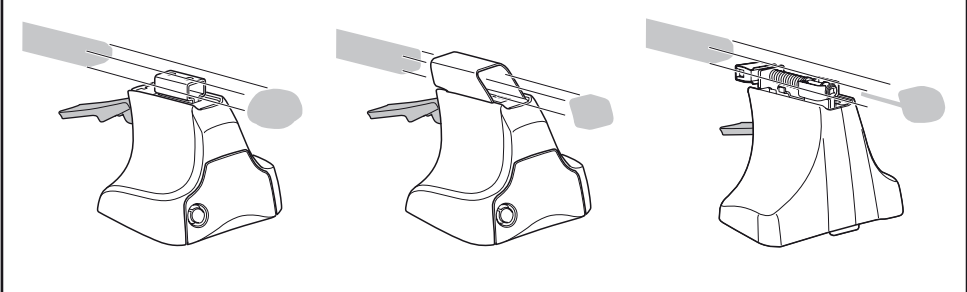
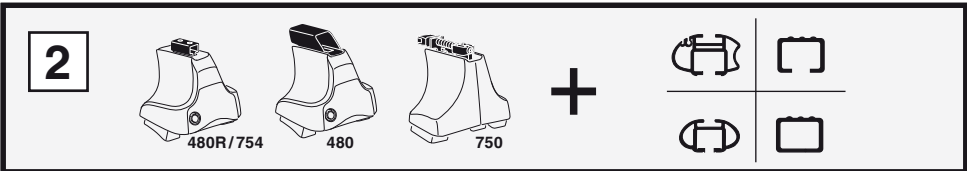
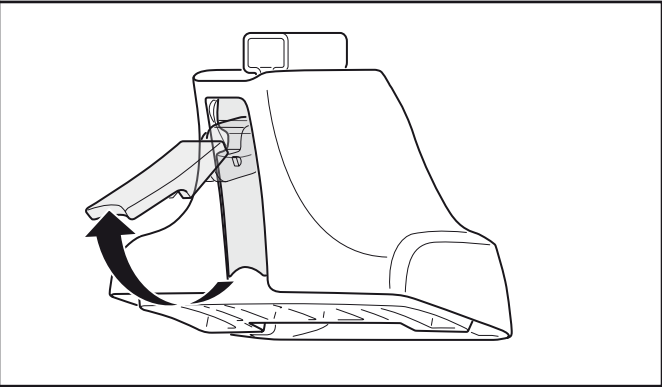
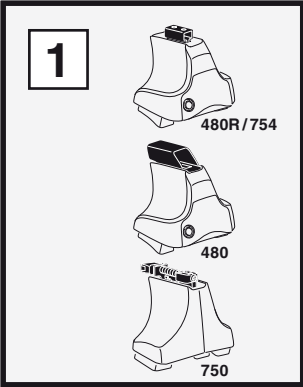
480

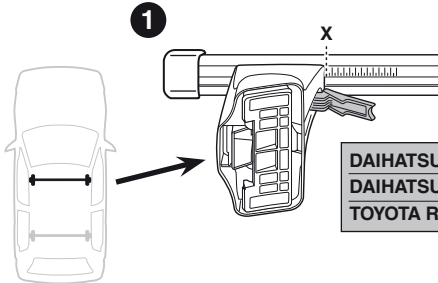
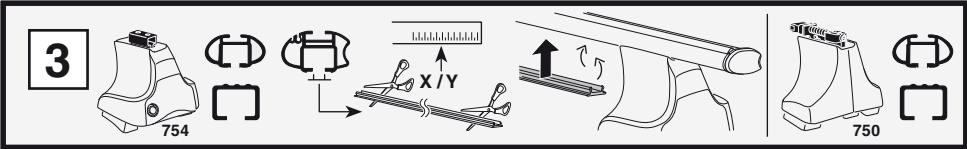


750

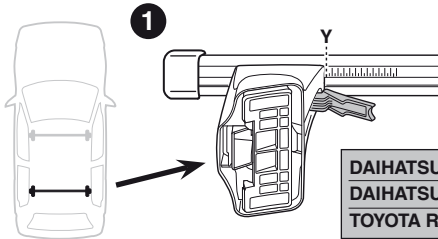


Kit

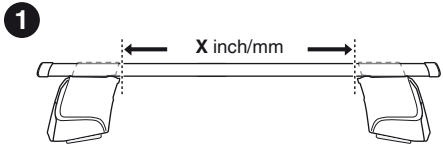
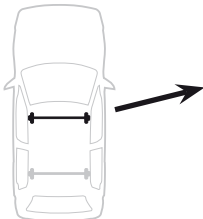
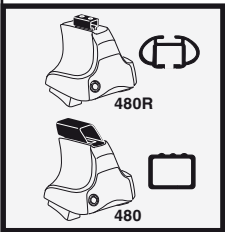




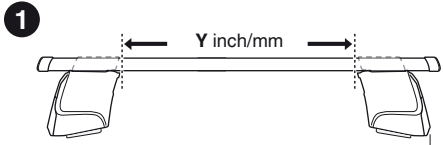
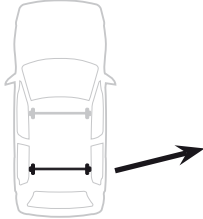
	X
DAIHATSU Be-Go, 5-dr SUV, 06-	33
DAIHATSU Terios, 5-dr SUV, 06-	33
TOYOTA Rush, 5-dr SUV, 06-(JPN)	33



	Y
DAIHATSU Be-Go, 5-dr SUV, 06-	28,5
DAIHATSU Terios, 5-dr SUV, 06-	28,5
TOYOTA Rush, 5-dr SUV, 06-(JPN)	28,5



	X inch	X mm
DAIHATSU Be-Go, 5-dr SUV, 06-	38 ⁵/₈ "	981 mm
DAIHATSU Terios, 5-dr SUV, 06-	38 ⁵/₈ "	981 mm
TOYOTA Rush, 5-dr SUV, 06-(JPN)	38 ⁵/₈ "	981 mm



	Y inch	Y mm
DAIHATSU Be-Go, 5-dr SUV, 06-	36 ⁷/₈ "	936 mm
DAIHATSU Terios, 5-dr SUV, 06-	36 ⁷/₈ "	936 mm
TOYOTA Rush, 5-dr SUV, 06-(JPN)	36 ⁷/₈ "	936 mm

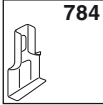
4

DAIHATSU Be-Go, 5-dr SUV, 06-
 DAIHATSU Terios, 5-dr SUV, 06-
 TOYOTA Rush, 5-dr SUV, 06-(JPN)

114



784



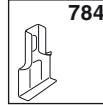
FL



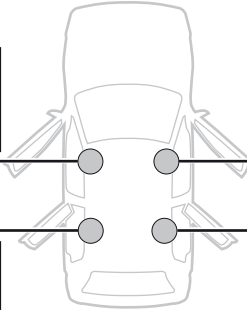
114



784



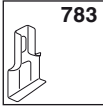
FR



114



783



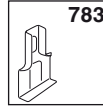
RL



114



783



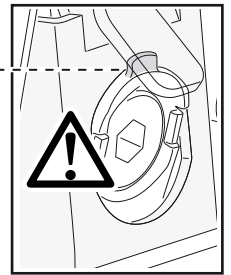
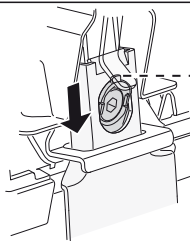
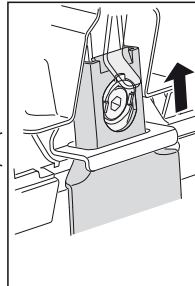
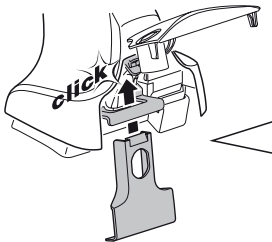
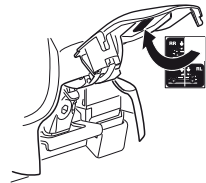
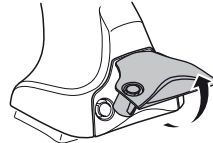
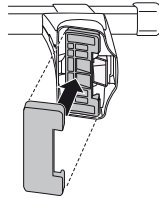
RR



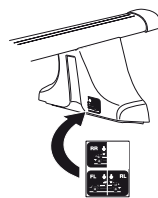
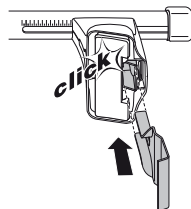
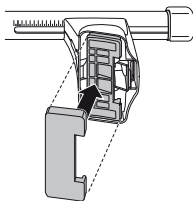
480R/754



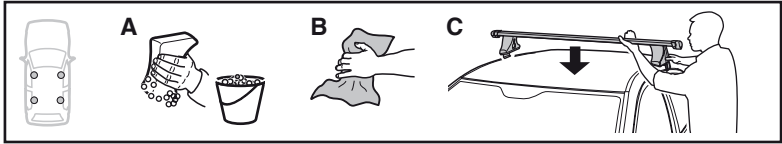
480



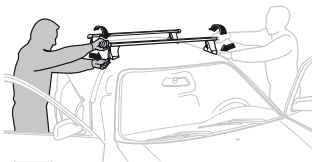
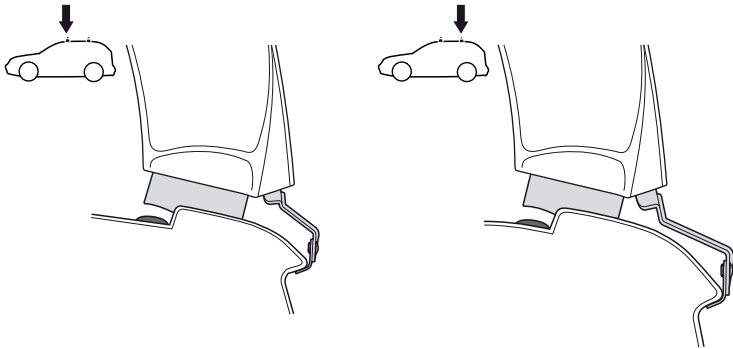
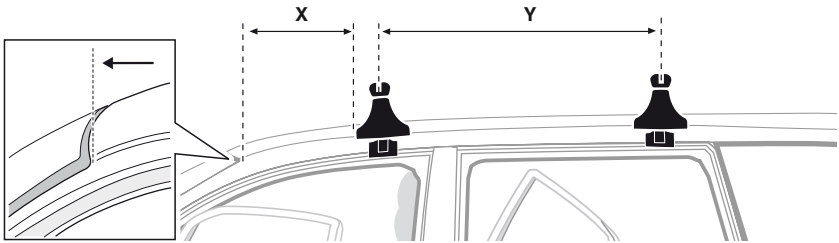
750



5



	X mm	Y mm	X inch	Y inch
DAIHATSU Be-Go , 5-dr SUV, 06-	350 mm	705 mm	13 3/4"	27 3/4"
DAIHATSU Terios , 5-dr SUV, 06-	350 mm	705 mm	13 3/4"	27 3/4"
TOYOTA Rush , 5-dr SUV, 06-(JPN)	350 mm	705 mm	13 3/4"	27 3/4"



GB/US Tighten alternately
D Die Schrauben abwechselnd anziehen
F Serrer alternativement chaque côté
NL Afwisselend aan de linker- en de rechterkant aandraaien
I Alternare il serraggio delle viti
E Apretar alternativamente
PT Aperte alternadamente
S Dra åt växelvis
FIN Kierrä vuorotellen
EST Pinguldage vaheldumisi
LAT Pievelciēt pamīšus
LIT Užsukinėkite pakaitomis
PL Śruby dokręcaj naprzemiennie
RU Затягивайте попеременно

CZ Pokrýtla багажника dokręcaj dokręcaj naprzemiennie.
SK Doťahujte striedavo
SLO Privijajte izmenično.
HR Naizmjenično zategnite
HU Egy mástól függetlenül szorítandó
GR Σφιγγετε εναλλάξ
TR Dönüşümlü sıkın

中文 交替拧紧

한국어 번갈아 가며 조이십시오.

日本語 交互に締め付けてください。

ไทย ขันในแบบสลับ

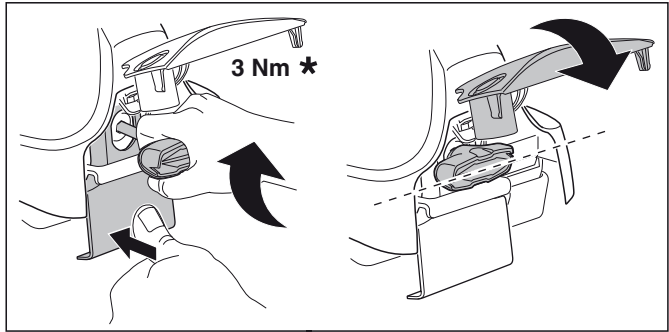
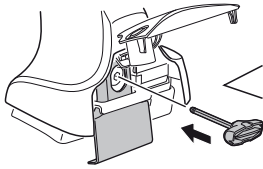
6



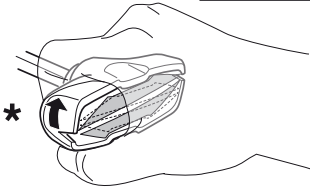
480R/754



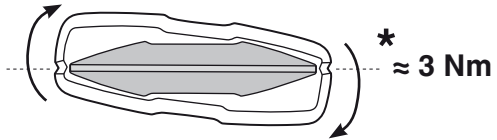
480



3 Nm *



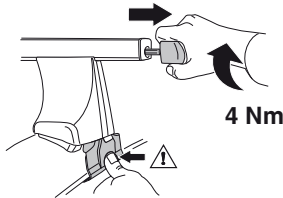
*



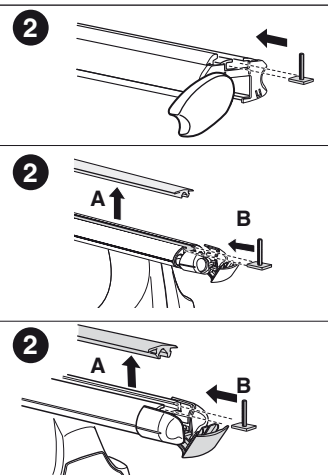
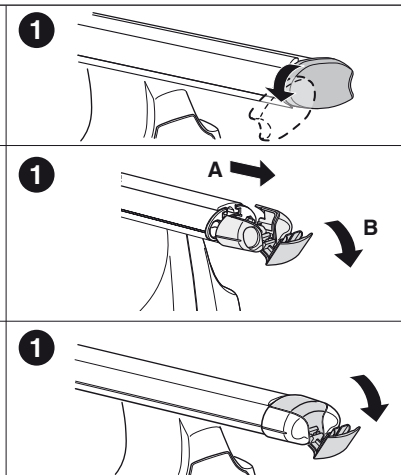
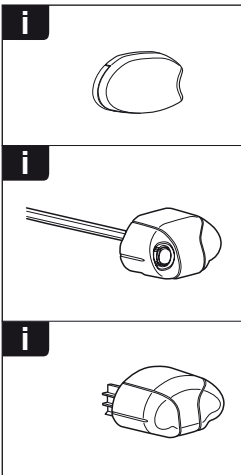
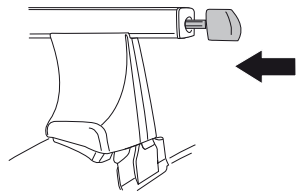
* ≈ 3 Nm

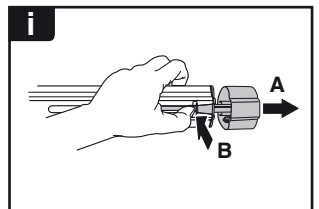
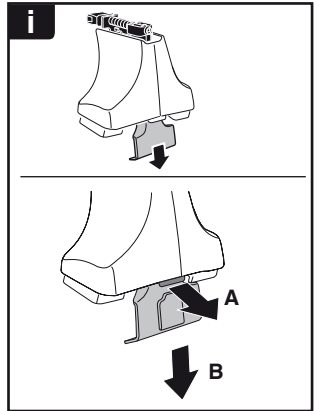
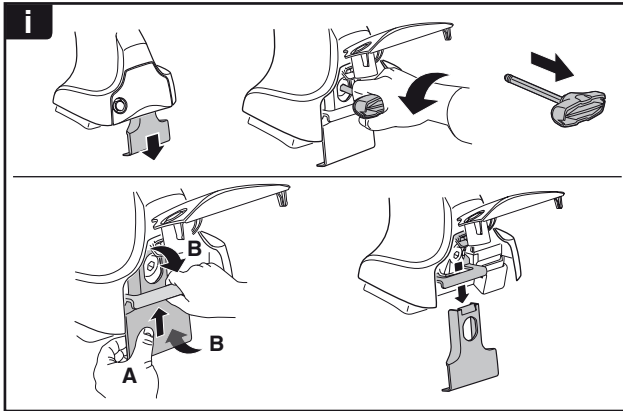
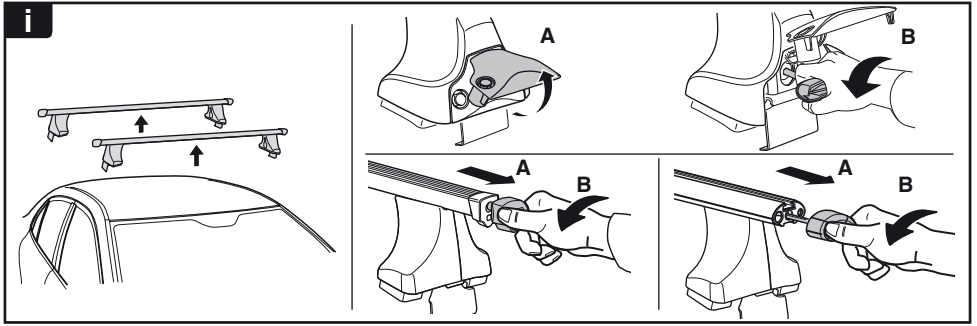


750



4 Nm

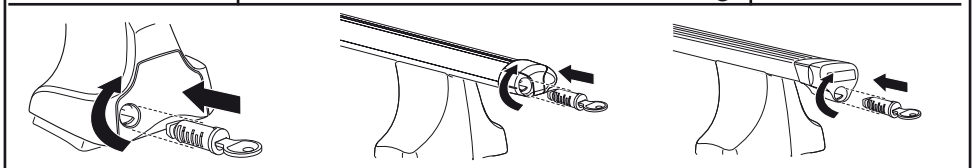




THULE
SWEDEN
**ONE
KEY
SYSTEM**



- 544 (x4)
- 596 (x6)
- 588 (x8)
- NA 510 (x10)
- EUR 452 (x12)
- ASIA



WW ▶ Thule Sweden AB, Box 69, 330 33 Hillerstorp, SWEDEN
NA ▶ Thule Inc., 42 Silvermine Road, Seymour, Connecticut 06483, USA

info@thule.com
customer.service@thule.com

www.thule.com